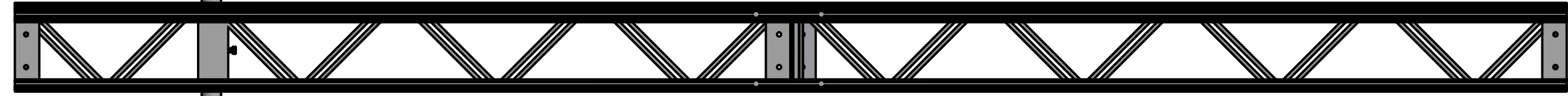
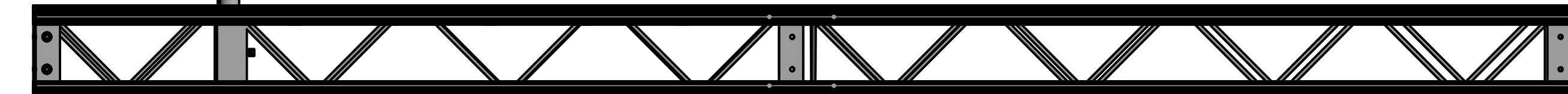


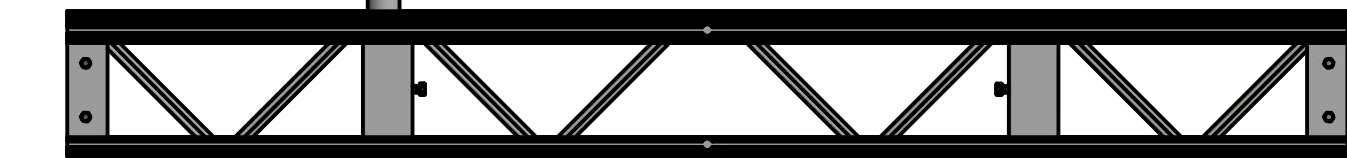
THANK YOU PURCHASING A LUND DOCK, BEFORE ASSEMBLING IT CAN SAVE TIME AND UNWASTED STEPS TO DO SOME PRE-PLANNING. BELOW ARE THE MOST COMMON SECTIONS AND PARTS LIST, 4 FT, 10FT, AND 12 FT SECTIONS ARE ALSO AVAIABLE IF NEEDED TO MAKE THE CONFIGERATION YOU WANT.



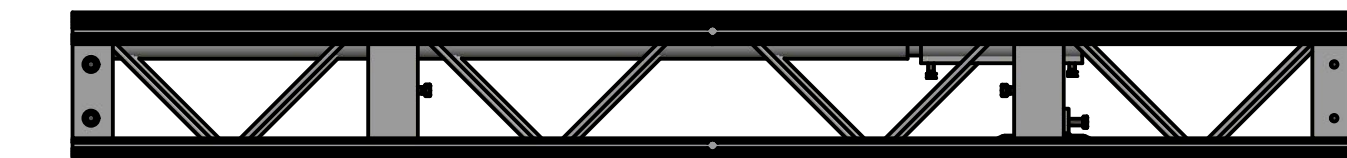
PARTS LIST			
ITEM	QTY	PART NUMBER	DESCRIPTION
1	1	2DAX67	67" DOCK AXLE 1 1/2" RD
2	2	2DGUP7	7FT UPRIGHT 2 3/8" RD
3	2	2DGUPBRKT	UPRIGHT BRACKET
4	2	3A2723190T002	RETAINING COUPLER
5	2	CDCKTIRE	DOCK TIRE



PARTS LIST			
ITEM	QTY	PART NUMBER	DESCRIPTION
1	2	2DGUP5	5 FT DOCK LEG 2 3/8" RD
2	2	2AUPAD	LEG GROUND PAD
3	2	H4400NCN	7/16" HEX NUT
4	4	H4415NCB	7/16" X 1 1/2" HEX BOLT
5	8	H4400ZFW	7/16" FLAT WASHER

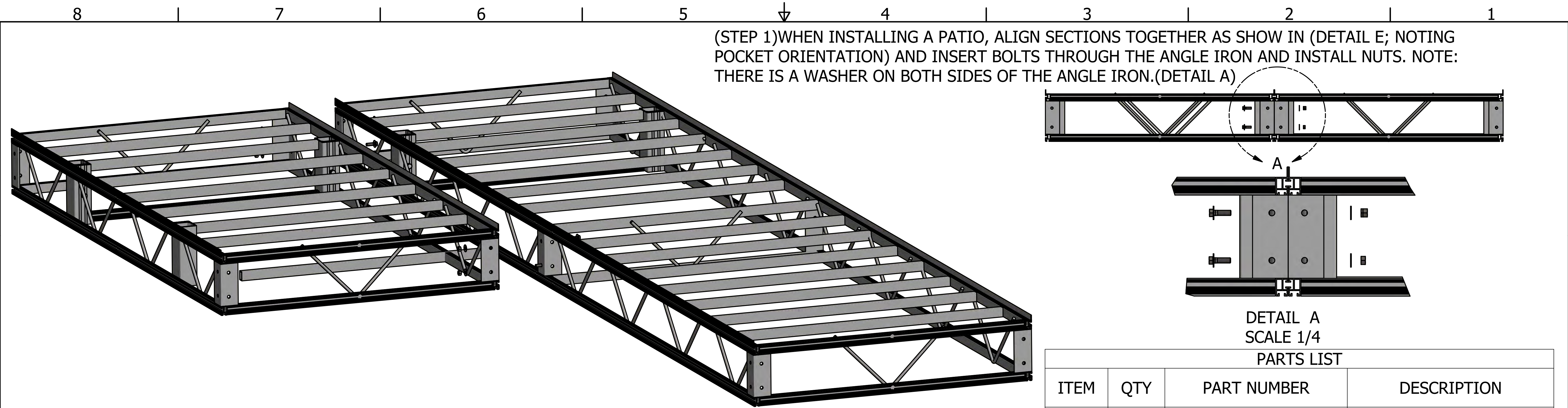


PARTS LIST			
ITEM	QTY	PART NUMBER	DESCRIPTION
1	2	2DGUP5	5 FT DOCK LEG 2 3/8" RD
2	2	2AUPAD	LEG GROUND PAD
3	4	H4415NCB	7/16" X 1 1/2" HEX BOLT
4	8	H4400ZFW	7/16" FLAT WASHER
5	4	H4400NCN	7/16" HEX NUT



PARTS LIST			
ITEM	QTY	PART NUMBER	DESCRIPTION
1	1	2AUPAD	LEG GROUND PAD
2	1	2DAX31	31" DOCK AXLE 1 1/2" RD
3	1	2DGUP5	5 FT DOCK POST 2 3/8" RD
4	1	3A2723190T012	12" AXLE COUPLER
5	4	H4400NCN	7/16" NUTS
6	8	H4400ZFW	7/16" WASHER
7	4	H4415NCB	7/16" X 1 1/2" BOLT

DRAWN LUND MANUFACTURING	6/11/2018	TITLE	
CHECKED		PRT NO	
QA		REV	
MFG		SCALE	.07
APPROVED		SECTION BOM'S	
		SHEET 1 OF 1	

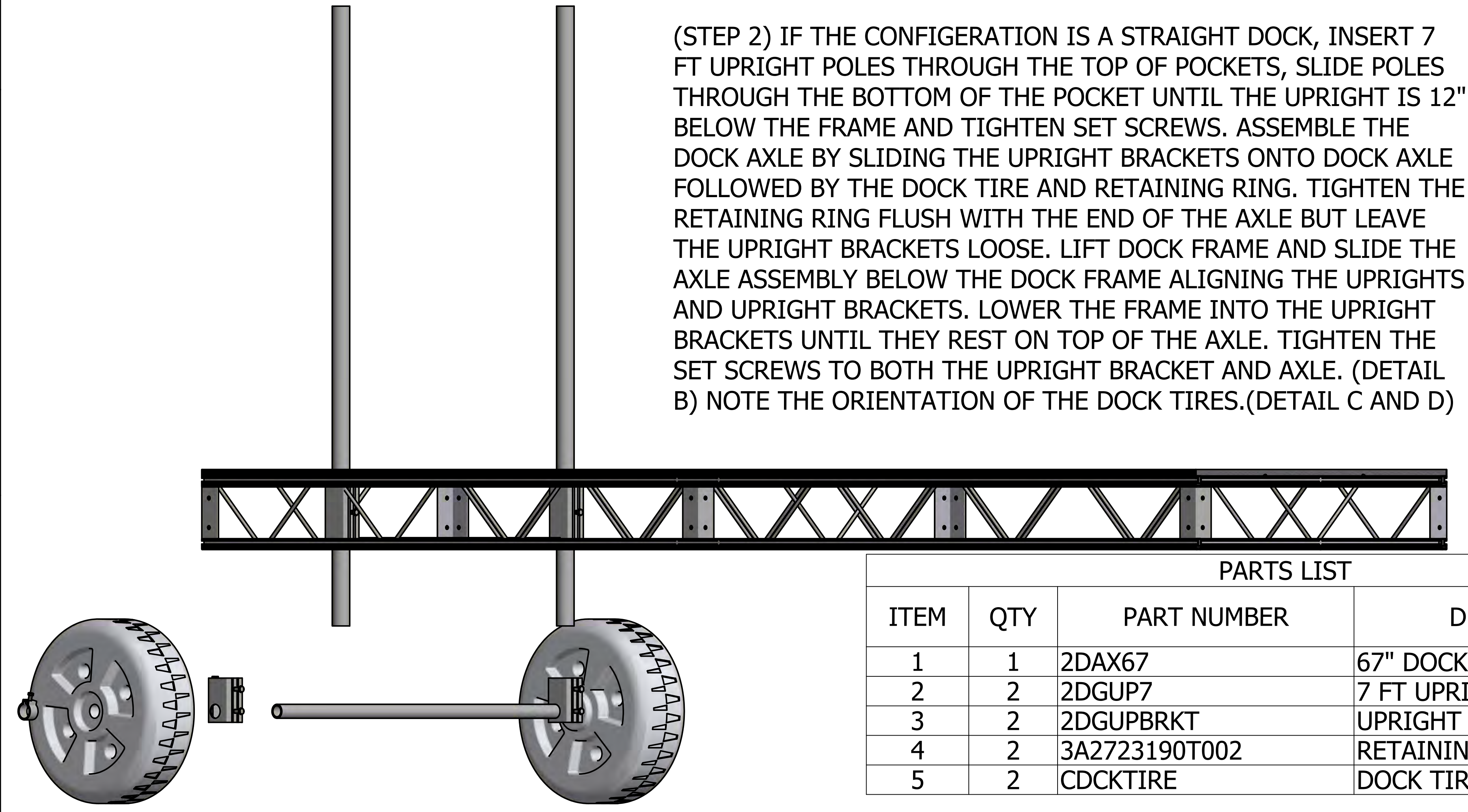


(STEP 1) WHEN INSTALLING A PATIO, ALIGN SECTIONS TOGETHER AS SHOW IN (DETAIL E; NOTING POCKET ORIENTATION) AND INSERT BOLTS THROUGH THE ANGLE IRON AND INSTALL NUTS. NOTE: THERE IS A WASHER ON BOTH SIDES OF THE ANGLE IRON. (DETAIL A)

DETAIL A
SCALE 1/4

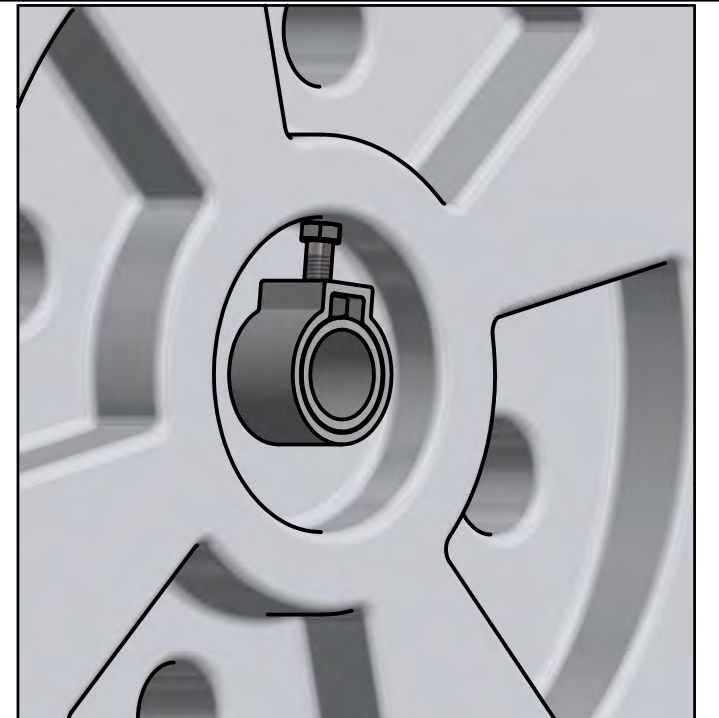
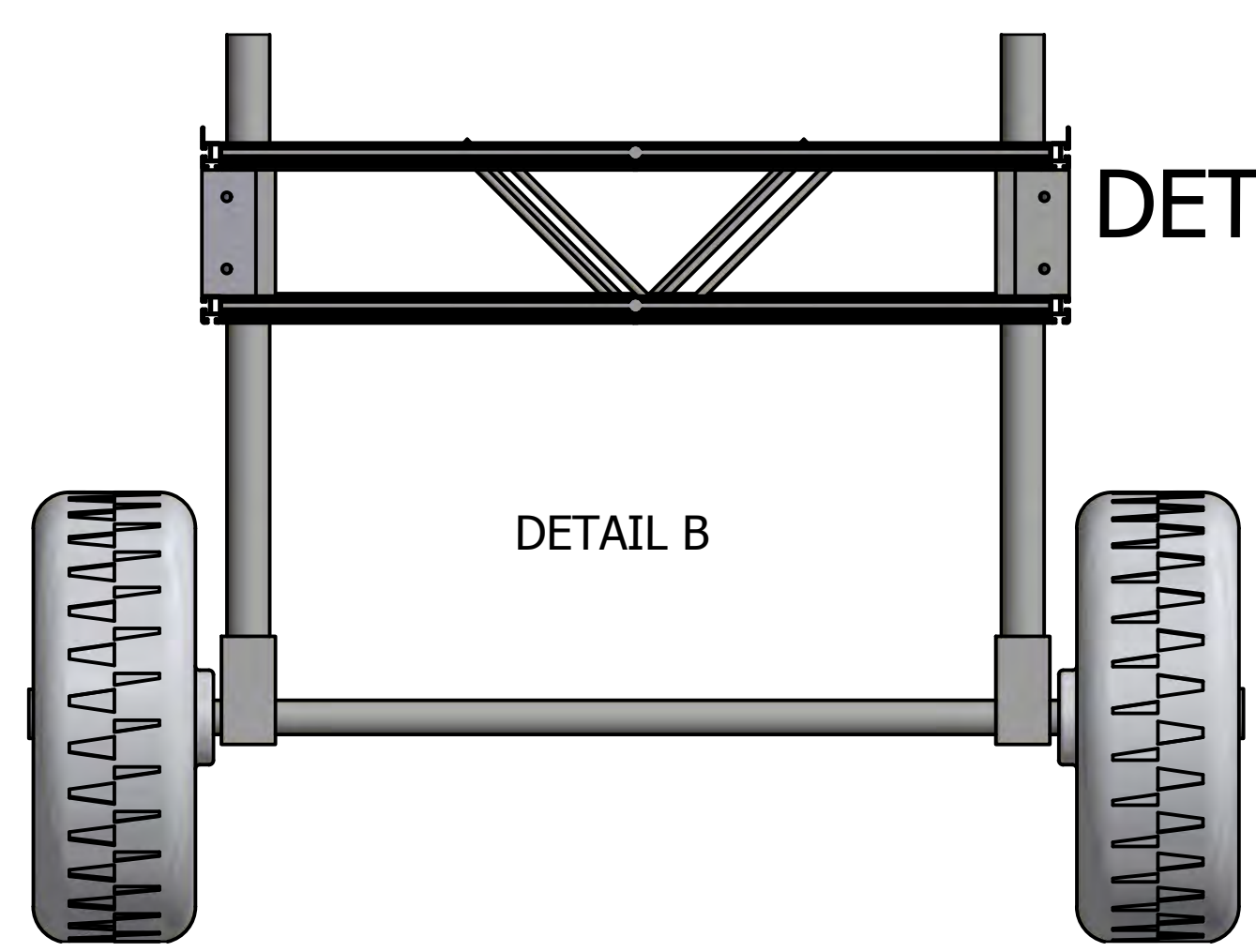
PARTS LIST

ITEM	QTY	PART NUMBER	DESCRIPTION
1	1	2AD16T	16 FT END FRAME
2	1	2AD8T	8 FT END FRAME
3	8	H4400ZFW	7/16" FLAT WASHER
4	4	H4415NCB	7/16" X 1 1/2" HEX BOLT
5	4	H4400NCN	7/16" HEX NUT

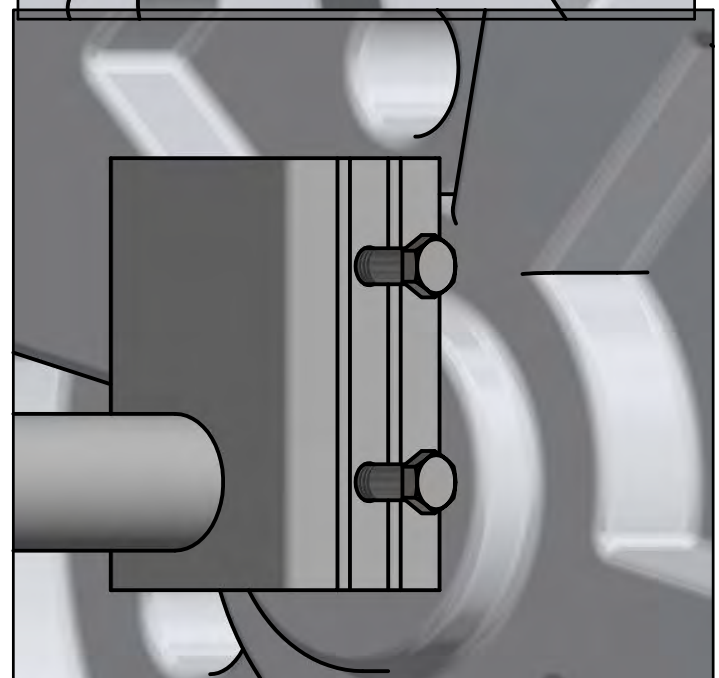


(STEP 2) IF THE CONFIGURATION IS A STRAIGHT DOCK, INSERT 7 FT UPRIGHT POLES THROUGH THE TOP OF POCKETS, SLIDE POLES THROUGH THE BOTTOM OF THE POCKET UNTIL THE UPRIGHT IS 12" BELOW THE FRAME AND TIGHTEN SET SCREWS. ASSEMBLE THE DOCK AXLE BY SLIDING THE UPRIGHT BRACKETS ONTO DOCK AXLE FOLLOWED BY THE DOCK TIRE AND RETAINING RING. TIGHTEN THE RETAINING RING FLUSH WITH THE END OF THE AXLE BUT LEAVE THE UPRIGHT BRACKETS LOOSE. LIFT DOCK FRAME AND SLIDE THE AXLE ASSEMBLY BELOW THE DOCK FRAME ALIGNING THE UPRIGHTS AND UPRIGHT BRACKETS. LOWER THE FRAME INTO THE UPRIGHT BRACKETS UNTIL THEY REST ON TOP OF THE AXLE. TIGHTEN THE SET SCREWS TO BOTH THE UPRIGHT BRACKET AND AXLE. (DETAIL B) NOTE THE ORIENTATION OF THE DOCK TIRES. (DETAIL C AND D)

DETAIL C



DETAIL D

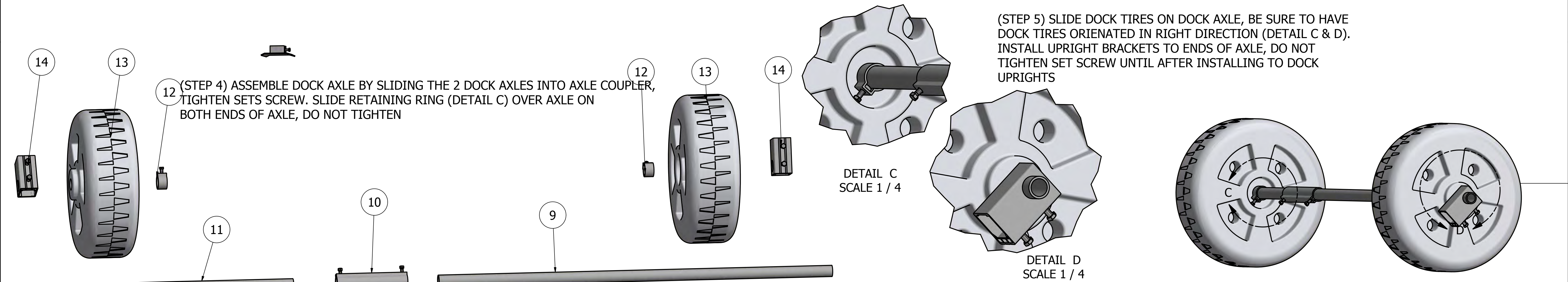
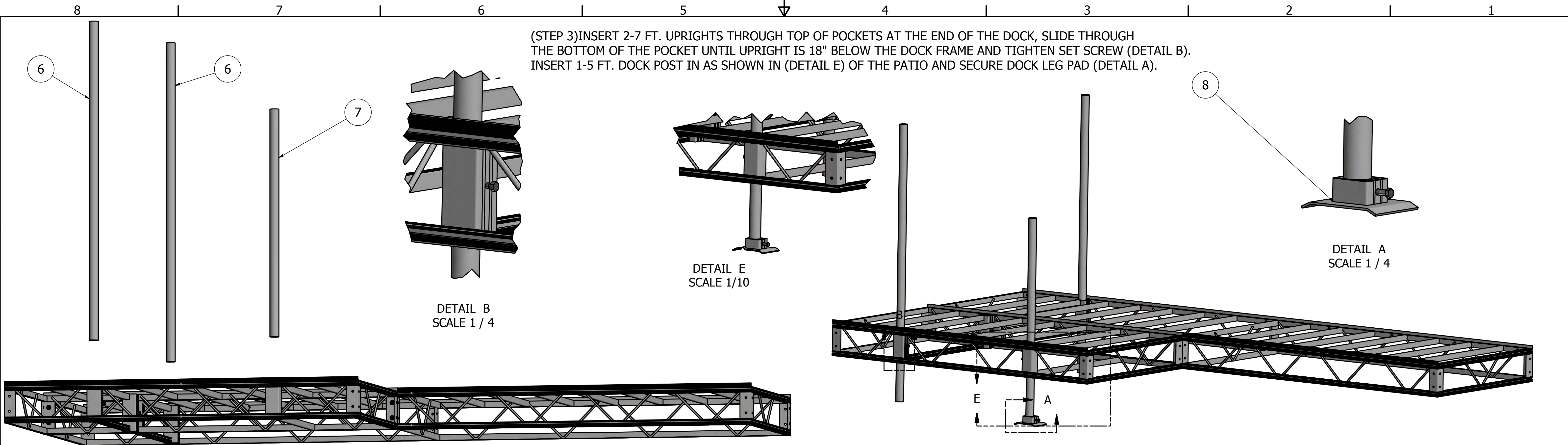


PARTS LIST

ITEM	QTY	PART NUMBER	DESCRIPTION
1	1	2DAX67	67" DOCK AXLE - 1 1/2" RD
2	2	2DGUP7	7 FT UPRIGHT - 2 3/8" RD
3	2	2DGUPBRKT	UPRIGHT BRACKETS
4	2	3A2723190T002	RETAINING RING
5	2	CDCKTIRE	DOCK TIRE

DRAWN Joel Newman	4/18/2018	TITLE
CHECKED		
QA		
MFG		
APPROVED		
SIZE D	PRT NO 2AD16T	REV
SCALE .1	SHEET 1 OF 1	

(STEP 3) INSERT 2-7 FT. UPRIGHTS THROUGH TOP OF POCKETS AT THE END OF THE DOCK, SLIDE THROUGH THE BOTTOM OF THE POCKET UNTIL UPRIGHT IS 18" BELOW THE DOCK FRAME AND TIGHTEN SET SCREW (DETAIL B). INSERT 1-5 FT. DOCK POST IN AS SHOWN IN (DETAIL E) OF THE PATIO AND SECURE DOCK LEG PAD (DETAIL A).



(STEP 4) ASSEMBLE DOCK AXLE BY SLIDING THE 2 DOCK AXLES INTO AXLE COUPLER, TIGHTEN SETS SCREW. SLIDE RETAINING RING (DETAIL C) OVER AXLE ON BOTH ENDS OF AXLE, DO NOT TIGHTEN

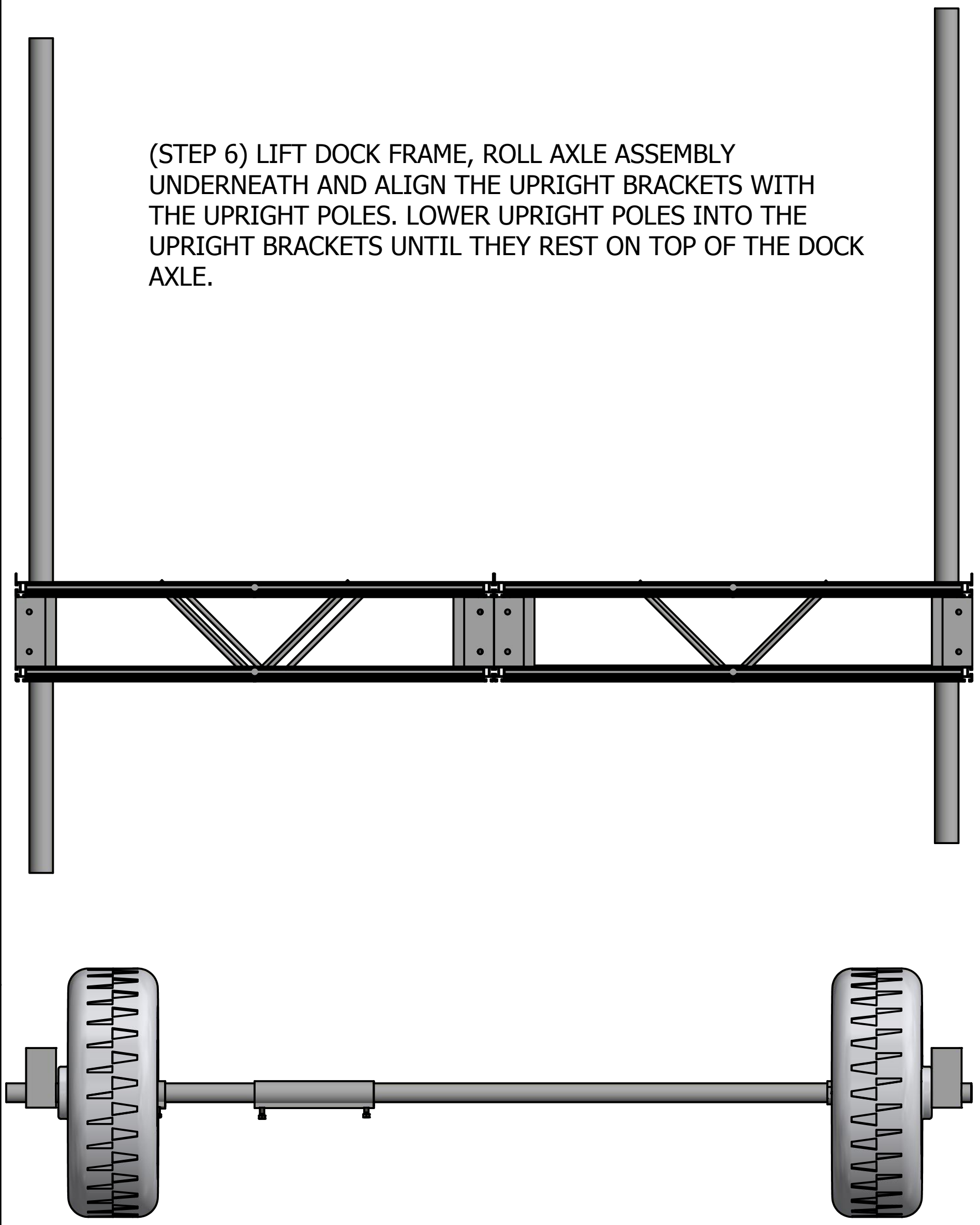
(STEP 5) SLIDE DOCK TIRES ON DOCK AXLE, BE SURE TO HAVE DOCK TIRES ORIENTATED IN RIGHT DIRECTION (DETAIL C & D). INSTALL UPRIGHT BRACKETS TO ENDS OF AXLE, DO NOT TIGHTEN SET SCREW UNTIL AFTER INSTALLING TO DOCK UPRIGHTS

PARTS LIST			
ITEM	QTY	PART NUMBER	DESCRIPTION
1	1	2AD16T	16 FT. END FRAME
2	1	2AD8T	8 FT END FRAME
3	8	H4400ZFW	7/16" FLAT WASHER
6	2	2DGUP7	7 FT. UPRIGHT 2 3/8" RD
7	1	2DGUP5	5 FT DOCK POST 2 3/8" RD
8	1	2AUPAD	LEG GROUND PAD
9	1	2DAX67	67" DOCK AXLE 1 1/2" RD
10	1	3A2723190T012	12" AXLE COUPLER
11	1	2DAX31	31" DOCK AXLE 1 1/2" RD
12	2	3A2723190T002	1 1/2" RETAINING RING
13	2	CDCKTIRE	DOCK TIRE
14	2	2DGUPBRKT	UPRIGHT BRACKETS

DRAWN Joel Newman	4/17/2018	TITLE
CHECKED		
QA		REV
MFG		
APPROVED		SIZE D
		SCALE .08
		PRT NO 2AD1688Assembly3-1
		SHEET 1 OF 1

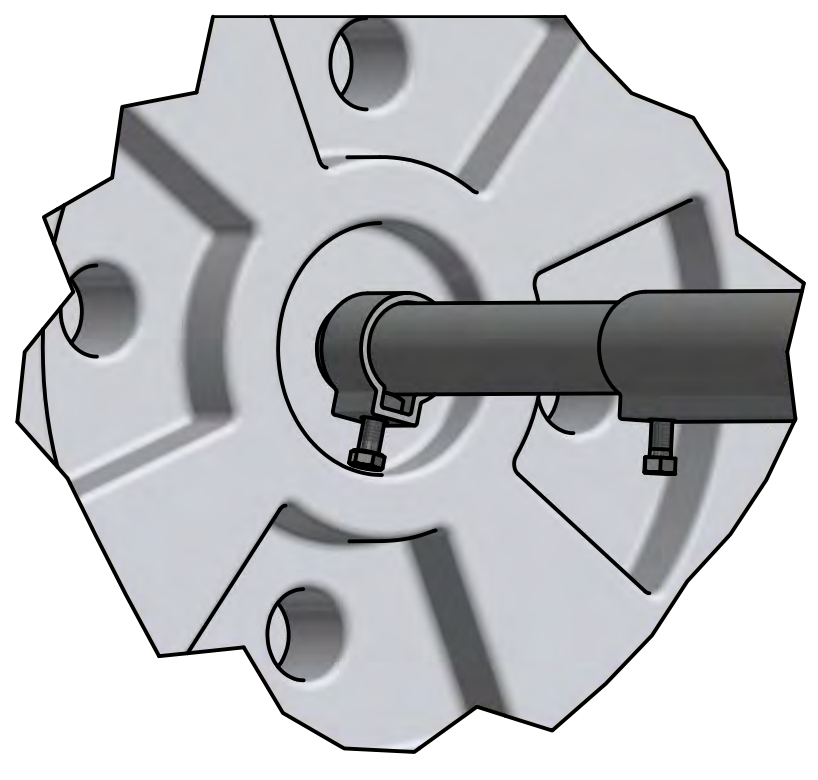
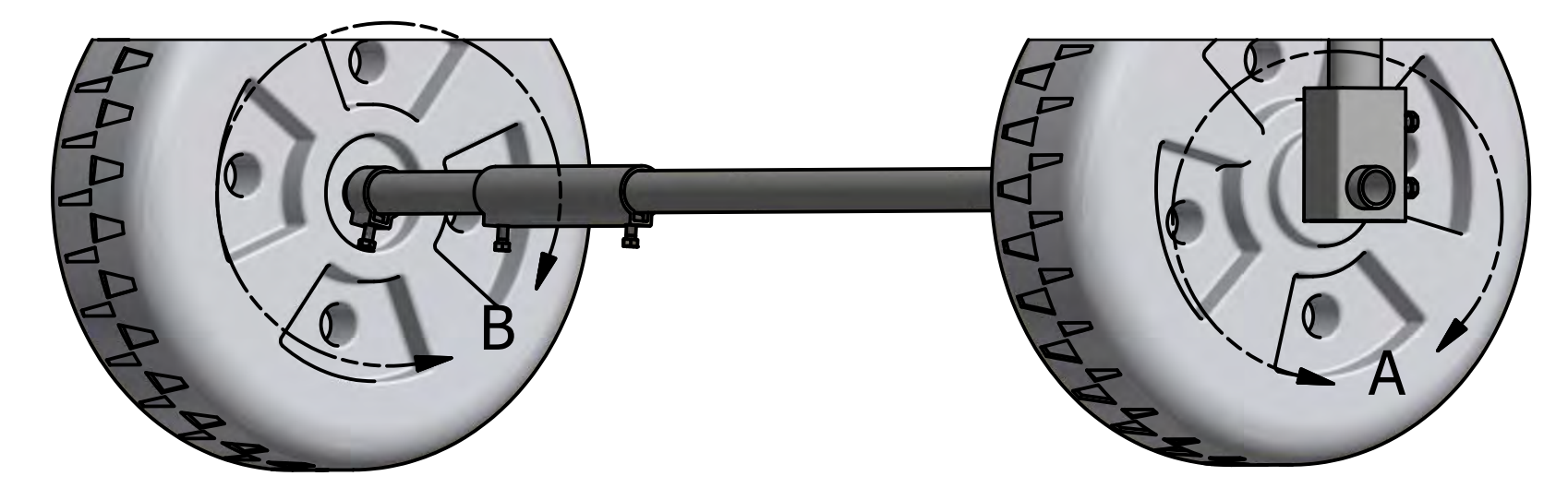
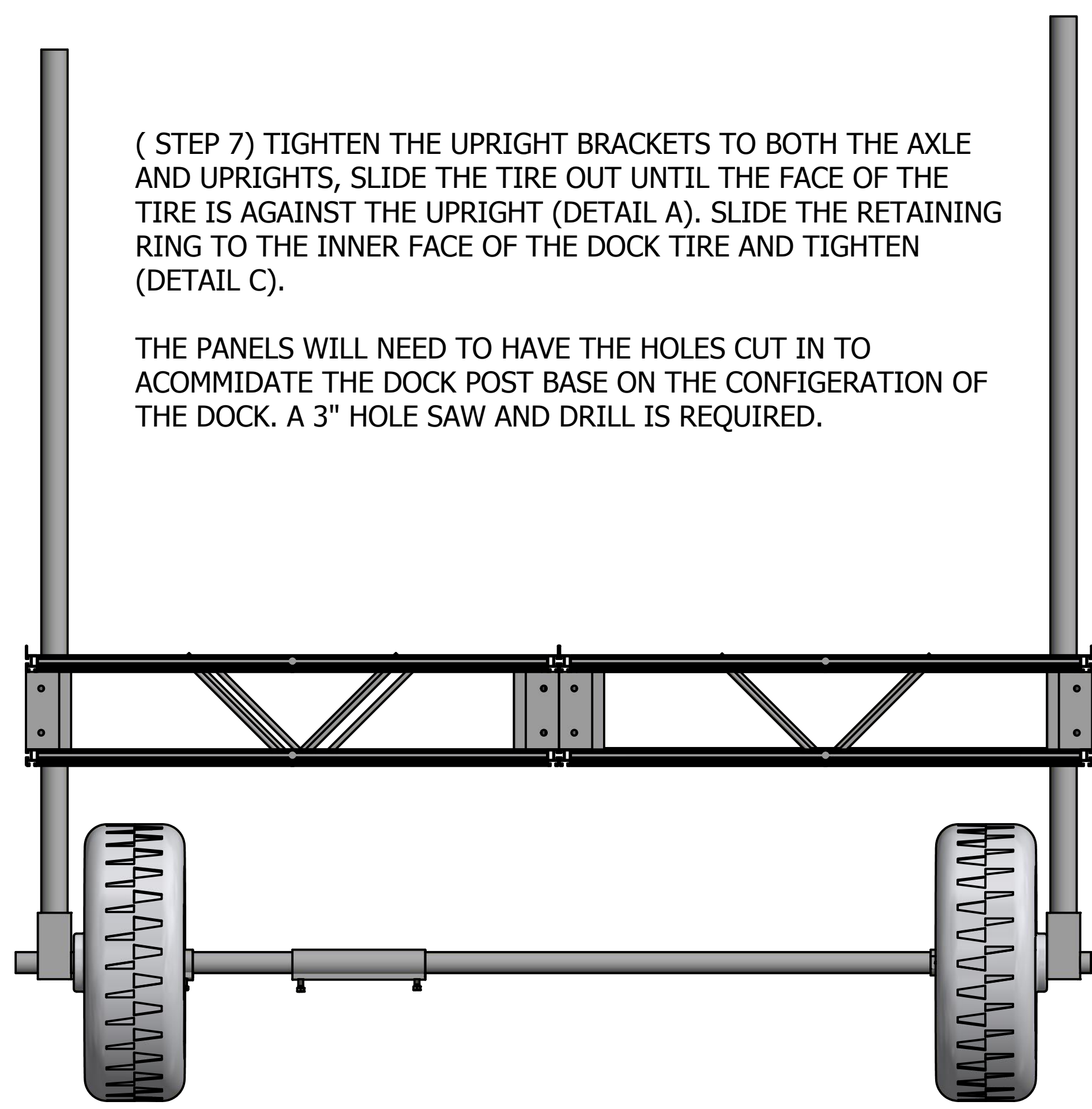
8 | 7 | 6 | 5 | 4 | 3 | 2 | 1

(STEP 6) LIFT DOCK FRAME, ROLL AXLE ASSEMBLY UNDERNEATH AND ALIGN THE UPRIGHT BRACKETS WITH THE UPRIGHT POLES. LOWER UPRIGHT POLES INTO THE UPRIGHT BRACKETS UNTIL THEY REST ON TOP OF THE DOCK AXLE.

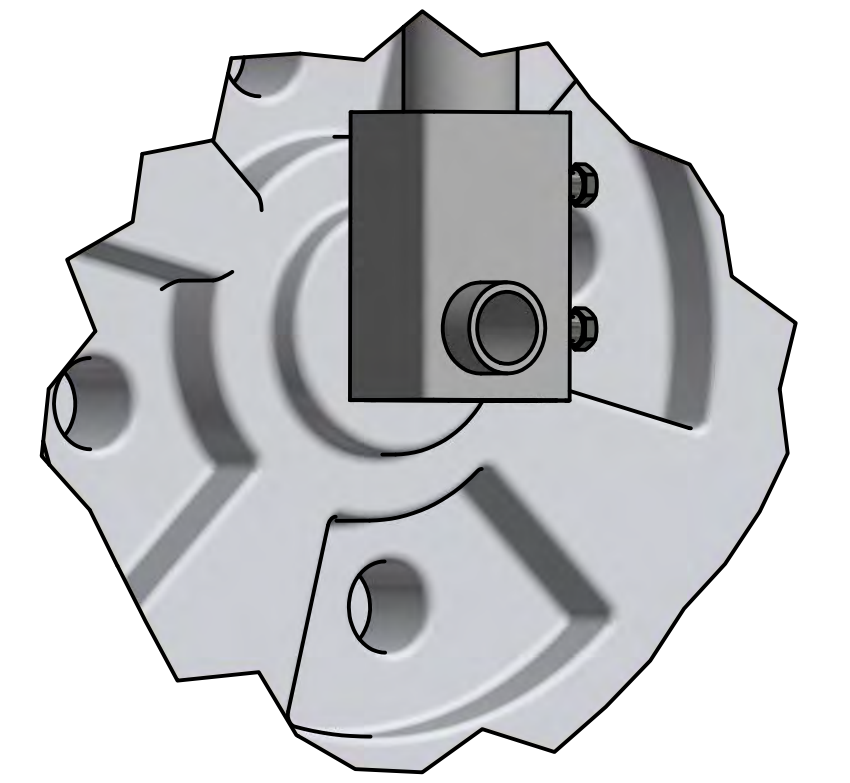


(STEP 7) TIGHTEN THE UPRIGHT BRACKETS TO BOTH THE AXLE AND UPRIGHTS, SLIDE THE TIRE OUT UNTIL THE FACE OF THE TIRE IS AGAINST THE UPRIGHT (DETAIL A). SLIDE THE RETAINING RING TO THE INNER FACE OF THE DOCK TIRE AND TIGHTEN (DETAIL C).

THE PANELS WILL NEED TO HAVE THE HOLES CUT IN TO ACCOMMODATE THE DOCK POST BASE ON THE CONFIGURATION OF THE DOCK. A 3" HOLE SAW AND DRILL IS REQUIRED.

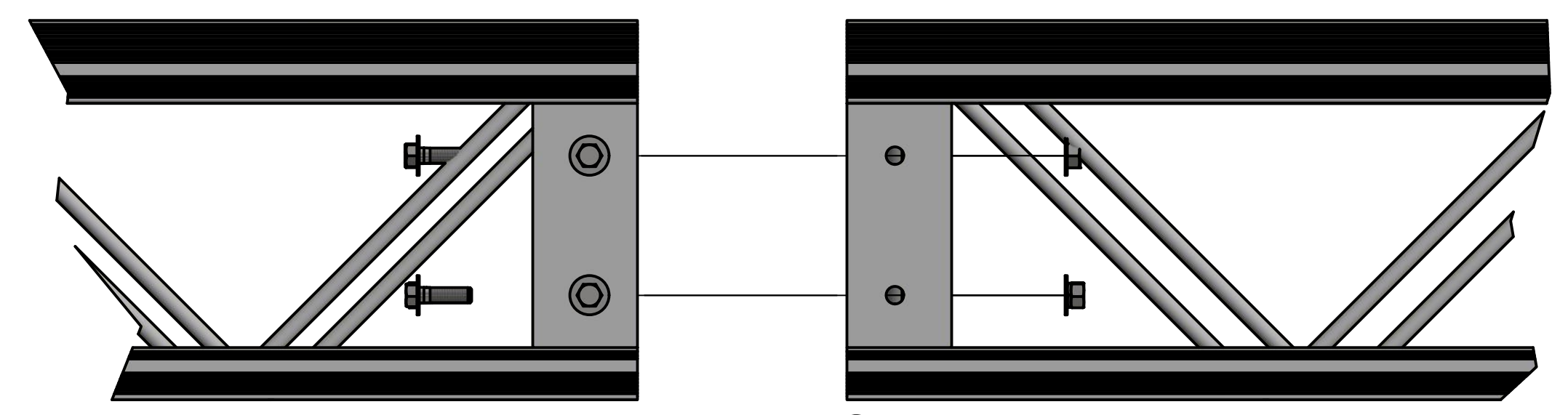
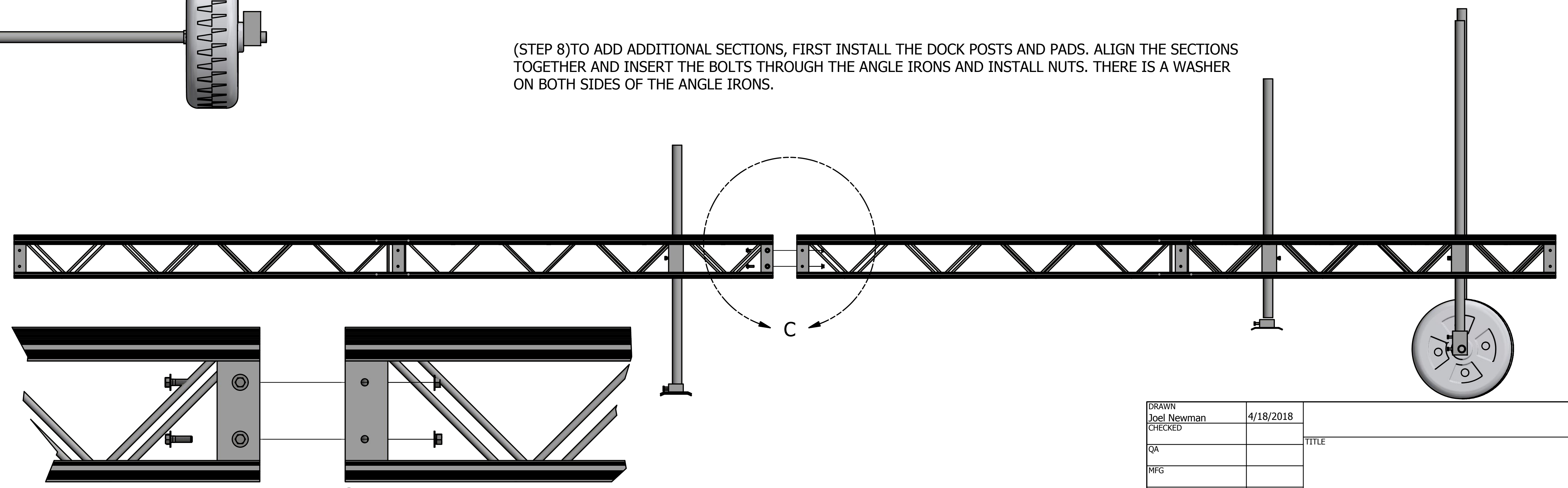


DETAIL B
SCALE 1 / 4



DETAIL A
SCALE 1 / 4

(STEP 8) TO ADD ADDITIONAL SECTIONS, FIRST INSTALL THE DOCK POSTS AND PADS. ALIGN THE SECTIONS TOGETHER AND INSERT THE BOLTS THROUGH THE ANGLE IRONS AND INSTALL NUTS. THERE IS A WASHER ON BOTH SIDES OF THE ANGLE IRONS.



DETAIL C
SCALE 1/4

DRAWN Joel Newman	4/18/2018	TITLE	
CHECKED		PRT NO 2AD1688Assembly4	
QA		SCALE .1	REV
MFG		SHEET 1 OF 1	
APPROVED			

8 | 7 | 6 | 5 | 4 | 3 | 2 | 1



Lund Manufacturing. (“Lund”) Conditional, Limited Product Warranty Policy

Lund warrants all Lund built or provided product, purchased by the original end-user owner from an authorized Lund dealer, to be free from original defects in the material and workmanship, under the conditions and loads for which the product was designed, from the date of the first retail purchase by the original end-user owner from an authorized Lund dealer, subject to all of the conditions and exclusions stated in this Warranty Agreement.

A. Warranty Period:

1. Aluminum and galvanized docks, canopy frames, and lifts structural elements, and welds (excluding fading and/or weathering of decking materials and or deterioration of coatings, graphics, and or appearance due to use and/or exposure – 15 years (see below noted Prorated Schedule).
2. Canopy fabrics and vinyls (excluding fading or deterioration of appearance due to use and/or exposure – 5 years (see below noted Prorated Schedule).
3. All other dock and lift components, options, accessories, parts, etc. (excluding components, options accessories and parts which carry their own manufacturer’s warranty, wherein that warranty will apply and excluding fading) – 2 years (see below noted Prorated Schedule).
4. Aluminum trailer & Steel structural elements and welds (excluding fading and/or weathering of decking materials and/or deterioration of coatings, graphics, and/or appearance due to use and/or exposure) – 1 year
5. Aluminum & Steel trailers, components, options, accessories, parts, etc, (excluding trailers, components, options, accessories, and parts which carry their own manufacturer’s warranty, wherein that warranty will apply, and excluding fading or deterioration of appearance due to use and/or exposure) – 1 year.

B. Conditions and Exclusions:

1. Lund is not liable for costs or consequential or incidental damages or injuries of any kind due to: (a) installation or removal of products, options, etc, by anyone other than an authorized Lund dealer or employee; (b) use, misuse, misapplication or improper selection of products, parts, etc; (c) neglect or failure to provide reasonable or necessary repairs or proper periodic maintenance; (d) damage or wear caused by improper application, usage, overloading, improper loading, , abuse, collision, accident, fire, vandalism, additions of options, accessories, parts, etc., not authorized in writing by Lund; damages caused by loose nuts, bolts, screws, cables, improperly torqued nuts, (e) repairs not authorized in writing by Lund , and/or (f) replacement of maintenance items that are worn out from normal/use including but not limited to winches, pulleys, cables, or lights..
2. Lund obligations under this Warranty Policy are limited to repair or replacement, at Lund sole discretion, up to the limits noted in the Limited Warranty Prorated Schedule portion of this Policy. Lund must authorize all repairs or replacements in writing in advance.
3. Lund shall not be liable for loss of time, cost of towing or transportation, or for incidental or consequential damage of any kind.
4. **The owner of any Lund product is liable for towing or delivery of product to any authorized repair location in the event any repair is required.**
5. Product owners understand and agree that any abuse, misuse, or use under conditions and/or loads other than for which the Lund product was designed, voids all warranty coverage and eliminates

any and all liability or responsibility of Lund for any damages, injuries or costs that the product owner may incur.

- Product owners understand and agree that a fully executed copy of this Warranty Policy must be delivered to Lund, within 30 days of the original purchase from an authorized Lund dealer, to initiate the Warranty Policy and to provide any coverage or benefits to end-use owner under this Warranty Policy. In addition, the product owner must deliver a photocopy of the fully executed copy of the Warranty Policy, directly, to Lund, with any Warranty claim.

-over-

LIMITED WARRANTY PRORATED SCHEDULE

Warranty Expense Paid By Lund Manufacturing.
Up To the Following Of

<u>Year After Purchase</u>	<u>15 Year Warranty</u>	<u>5 Year Warranty</u>	<u>Year After Purchase</u>	<u>15 Year Warranty</u>
1	95%	85%	9	55%
2	90%	70%	10	50%
3	85%	55%	11	45%
4	80%	40%	12	40%
5	75%	25%	13	35%
6	70%		14	30%
7	65%		15	25%
8	60%			

THE FOREGOING WARRANTIES ARE EXCLUSIVE AND IN LIEU OF ALL OTHER WARRANTIES. LUND MAKES NO OTHER WARRANTY OF ANY KIND WHATSOEVER, EXPRESS OR IMPLIED; ALL IMPLIED WARRANTIES OF MERCHANTABILITY AND FITNESS FOR A PARTICULAR PURPOSE ARE HEREBY DISCLAIMED.

Name of Authorized Dealer
(Dealer that sold the new Lund product
to original end use owner)

Name of Original End Use Owner

Authorized Dealer Signature

Signature of Original End Use Owner

Date Original Product Sold To End User